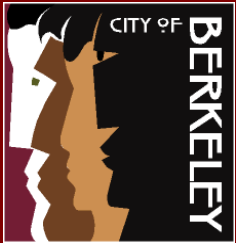
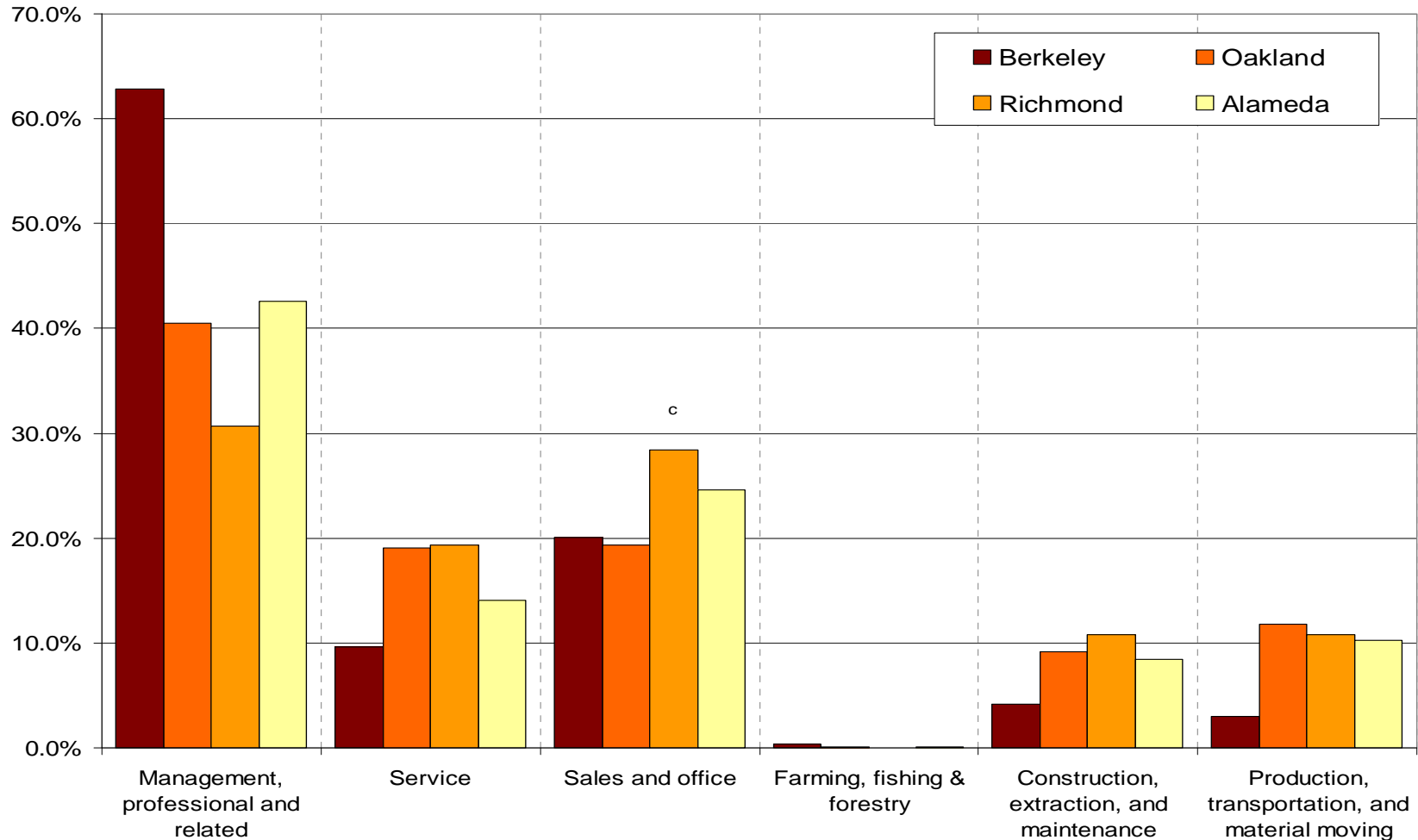


Easy Bay Green Corridor Partnership: *Leveraging Berkeley's Regional Strengths*



Michael Caplan
City of Berkeley
Office of Economic Development
mcaplan@ci.berkeley.ca.us
510-981-2490

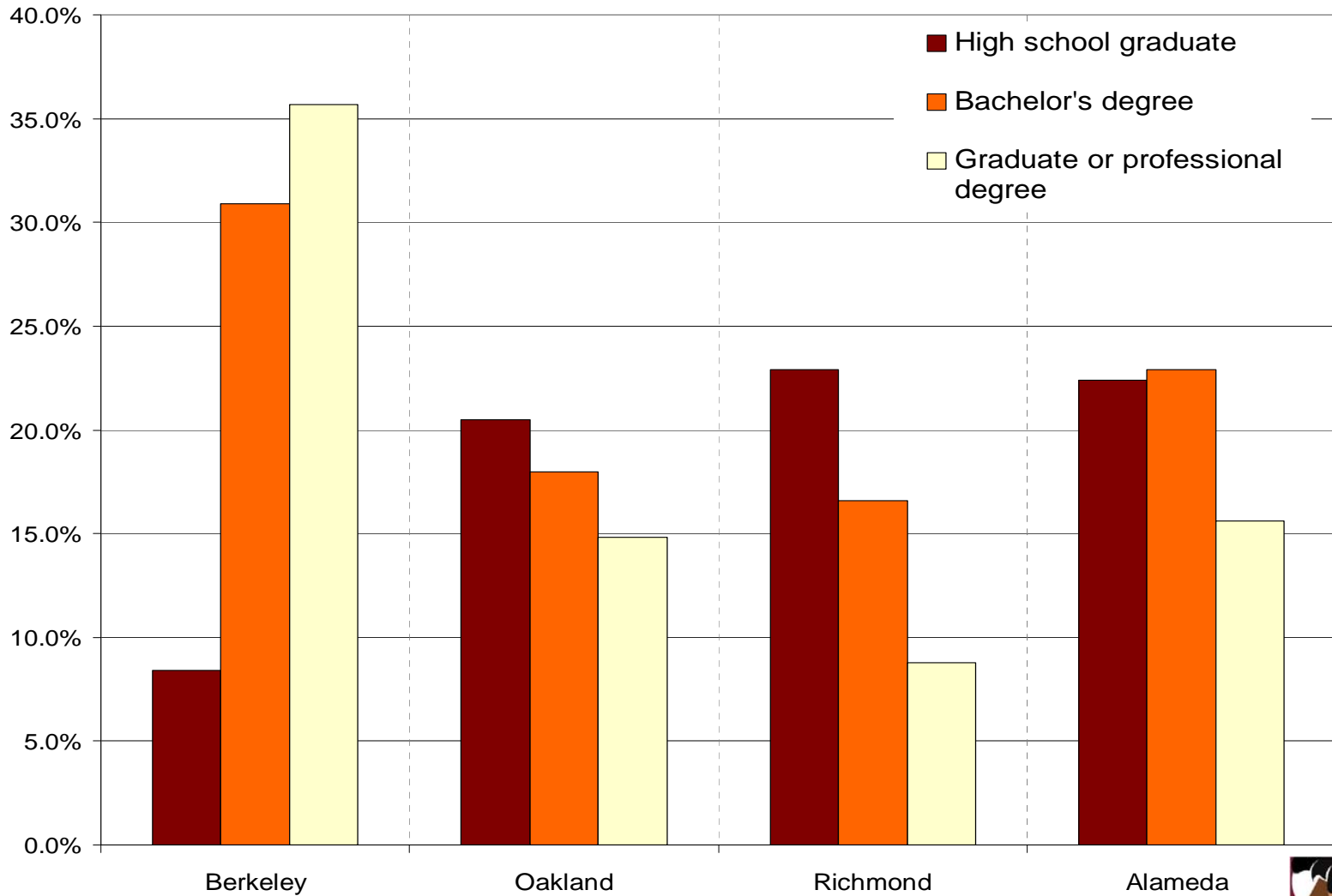
Labor and Employment by Occupation



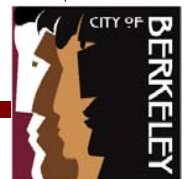
Source: 2006 ACS Estimates, Bay Area Census



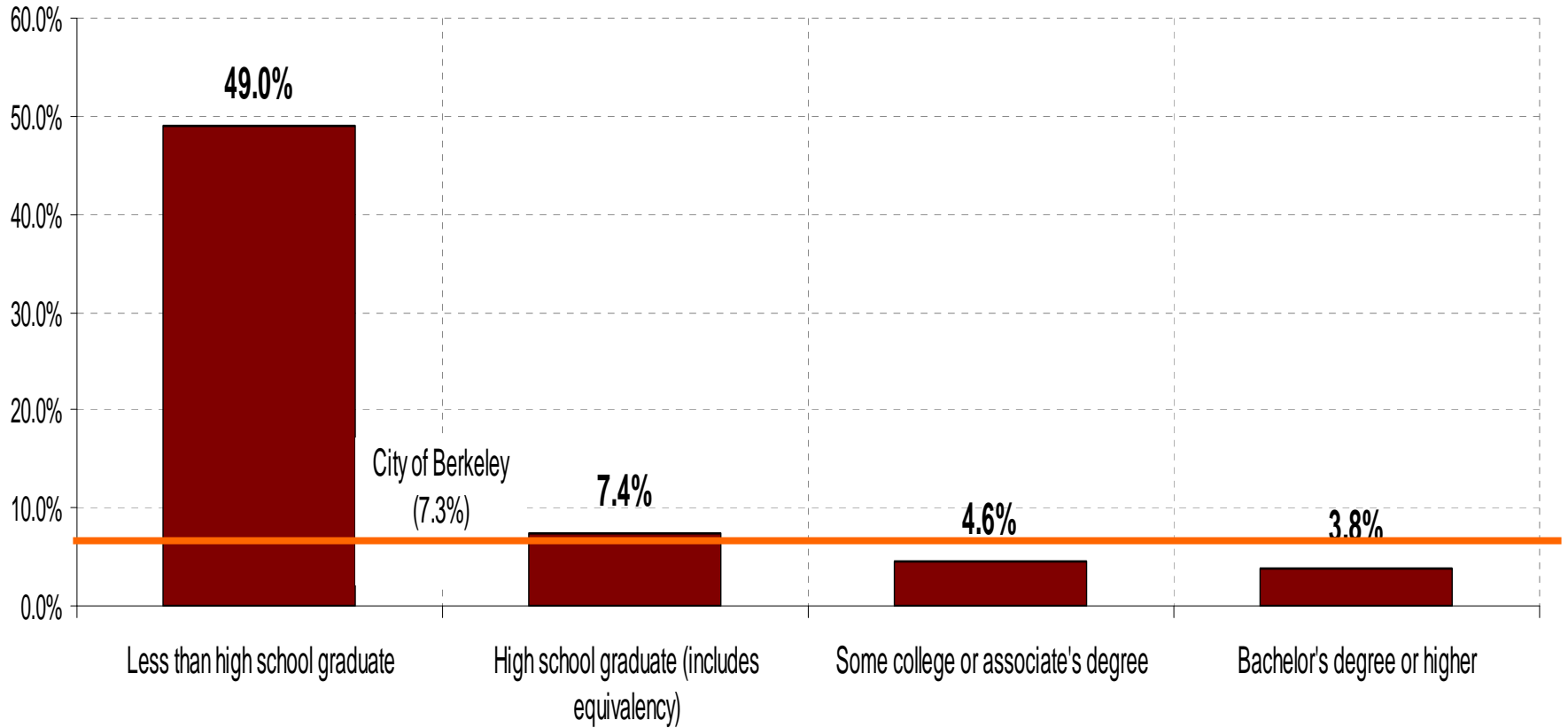
Berkeley Educational Attainment Compared to Other Green Corridor Cities



Source: 2006 ACS Estimates, Bay Area Census



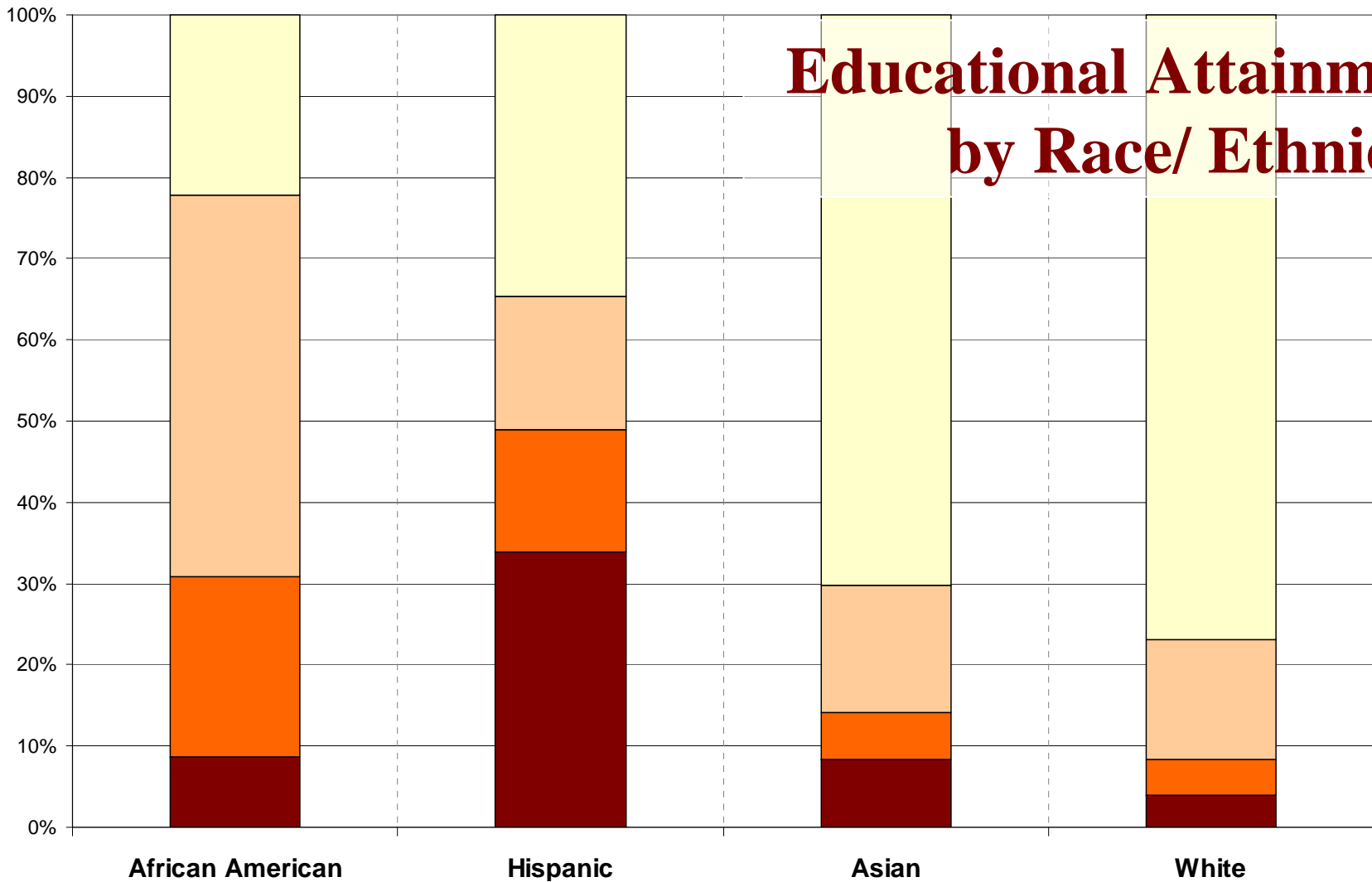
Unemployment Rate by Educational Attainment



Source: US Census- American Community Survey (ACS) 2006



Educational Attainment by Race/ Ethnicity



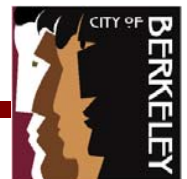
■ Less than high school diploma

■ High school graduate

■ Some college or associate's degree

■ Bachelor's degree or higher

Source: US Census- American Community Survey (ACS) 2006

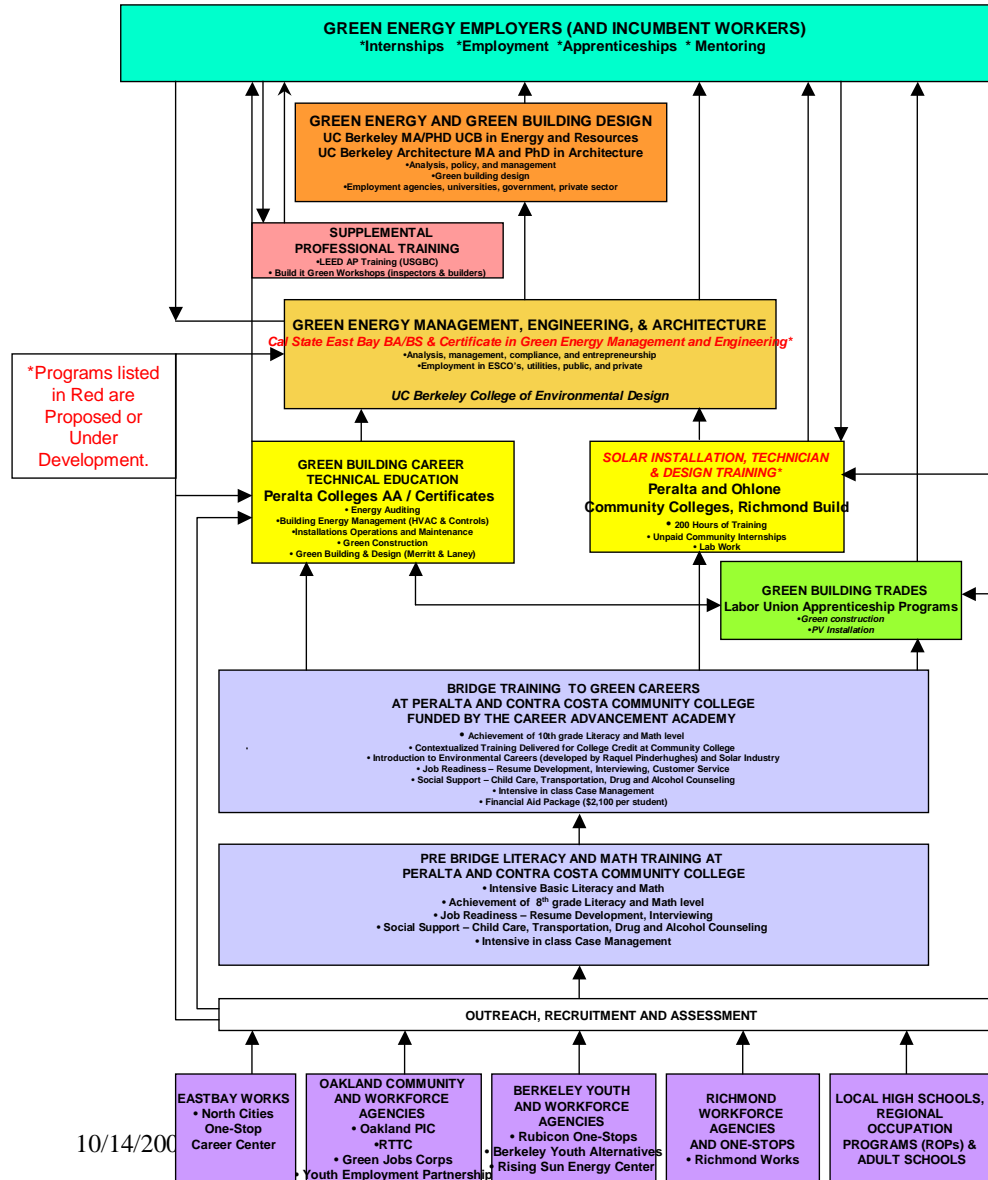


GREEN ACADEMY VISION

GREEN ENERGY EDUCATION PATHWAYS

In the East Bay Green Corridor

Education for Environmental Sustainability, Social Justice, and Community Development



10/14/200

Next Steps

1. Summit in January
2. Metrics, definitions, dashboard
 - \$200,000 grant at DCRP to research further – common regional dashboard
3. Implement Career Pathways and High School Academy
4. Establish system to refer and place spin-off businesses in the EBGCP
5. Coordinate around regional business retention
6. Support for new incubator development
7. Regional marketing
8. Possible addition of new formal partners
9. Coordination around policy issues such as Berkeley's solar financing concept, green building standards, land use, etc.

